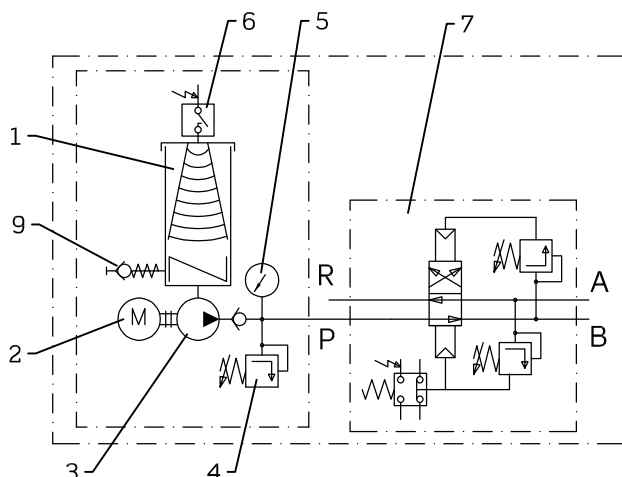


1. Tank
 2. Electric motor
 3. Piston pump
 4. Outlet pressure limiting valve
 5. Pressure gauge
 6. Level switch
 7. Line changeover valve
 8. Line changeover pressure regul. valve
 9. Tank refilling connection
 10. Tank emptying connection
 11. Base plate
- P Pressure outlet
R Return
A-B Connections to the circuit



GF33

Automatic pump for twin line system

Technical data

Piston pump
Lubricant..... Mineral or synthetic oil (> ISO VG100) up to NLGI2
Working temperature..... +10°C ÷ +80°C
Workin pressure..... 250 bar
Maximum pressure.....350 bar
Flow:

Ratio	Flow*
1:50	1,8 litres/hour
1:30	3 litres/hour
1:12	7,5 litres/hour

*NLGI-2 at 20°C

Electric motor

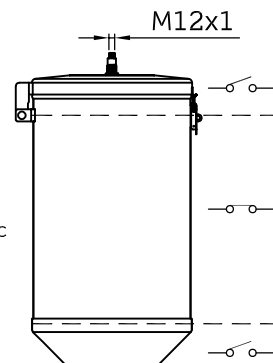
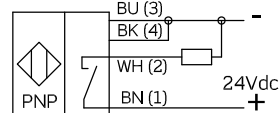
50 Hz 230/400 V ΔY 0,37 kW 1,79/1,03 A 1385/min
60 Hz 460 V Y 0,43 kW 1,09 A 1685/min

Tanks

2 - 4 - 7 - 10 - 20 - 25 - 30 kg in stainless steel
40 - 60 kg steel with cataphoretic coating

Ultrasonic level switch

For controlling minimum and maximum level



Contact form..... PNP NA
Connector (not included)..... M12x1 5 pin
Voltage..... 10...28VDC
Max breakdown power..... 100mA
Protection degree..... IP67

Line changeover by overpressure

HZ02/A-1/52..... flow 3 litres/hour
HZ03/A-1/2..... flow 12 litres/hour
HZ04/A-1/2..... flow 12 litres/hour
Line change press..... manual adjustment 40...300 bar

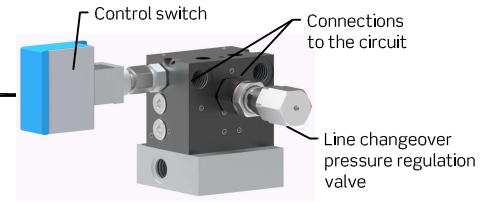
Changeover reference	Connections A-B
HZ02/A-1/52	G 3/8
HZ03/A-1/2	G 1/4
HZ04/A-1/2	G 1/4

Microswitch technical data

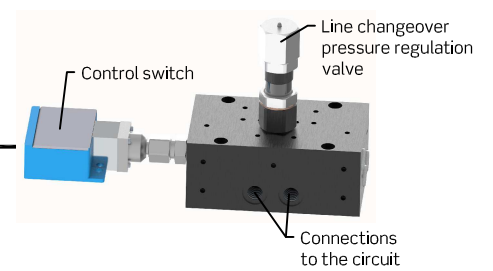
Protection degree..... IP 66
Category of use..... AC-15
3A 240V
Ui:500V / Uimp:6kV



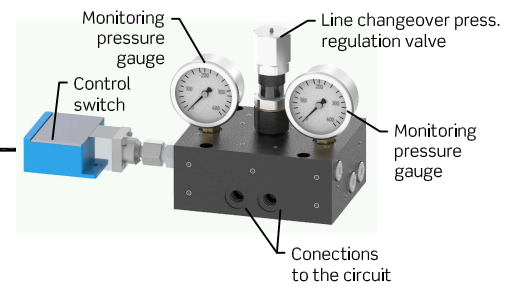
HZ02/A-1/52 changeover valve
for pumps with flow 1,8 y 3 l/hour



HZ03/A-1/2 changeover valve
for pumps with flow 7,5 l/hour

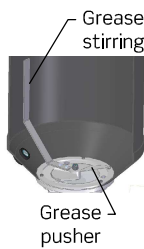


HZ04/A-1/2 changeover valve
for pumps with flow 7,5 l/hour



GF33 / X - 1 / X - X - X X - X

Lubricant	X	Drive system	X	Flow litres/hour	X	Tank	X	Level switch	X	Base plate	X
Oil	A	Free shaft	0	1,8	5	Without	0	Without	0	Without	0
Grease (with grease stirring and grease pusher)	B	Without electric motor Flange Ø105 + coupling	1	3,0	3	2 kg AISI	1A	Without	0	With base plate	1
						4 kg AISI	2A			with base plate + HZ02/A-1/52 changeover	2
						7 kg AISI	3A				
		With electric motor	3	7,5	1	10 kg AISI	4A	With	5	Without	0
						20 kg AISI	5A			With base plate	1
						25 kg AISI	6A			With base plate + HZ03/A-1/2 changeover	3
						30 kg AISI	7A			With base plate + HZ04/A-1/2 changeover	9
						40 kg steel	8				
						60 kg steel	9				



Dimensions (mm)

